



JOHN PSARRAS
S&P CHARTERING



IN PIRAEUS SINCE 1981

Ph:+30 210 4123696 4133931 4115482 Fx:+30 210 4170618
E'Mail: psarras@psarrasj.gr Website:www.psarrasj.gr
(Members of Hellenic Shipbrokers Association - 1984)

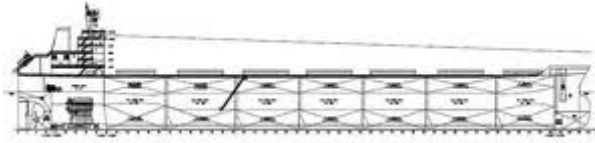
BI-MONTH REPORT

MID FEBRUARY 2019

The scope of this report is to assist our clients and friends with a quick glance every about 15 days to get a feeling of the market by reading the more interesting sales in view of higher or lower prices of the main vessels types as well as the demolition prevailing prices.



Copyright:seawasel



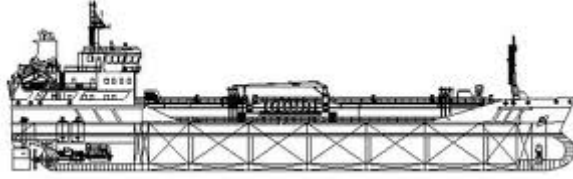
BULK CARRIERS

| NAME | DWT | Y.O.B | P.O.B | PRICE |
|----------------|--------|-------|---------|---------------------------------|
| DENSA COBRA | 180491 | 2011 | S.KOREA | 27,5 MIL USD TO UNDISCLOSED |
| TENDER SALUTE | 95695 | 2011 | JAPAN | 17 MIL USD TO BELGIANS |
| OSMARINE | 76596 | 2006 | JAPAN | 9,5 MIL USD TO GREEKS |
| MEDI BALTIMORE | 76469 | 2005 | JAPAN | EN BLOC 16,3 MIL USD TO CHINESE |
| MEDI CAGLIARI | 75772 | 2004 | | |
| PONTONIKIS | 74362 | 2002 | S.KOREA | 6,8 MIL USD TO CHINESE |
| ALSTER BAY | 55430 | 2008 | JAPAN | 12,2 MIL USD TO UNDISCLOSED |
| STAR KAPPA | 52055 | 2001 | JAPAN | 6,2 MIL USD TO UNDISCLOSED |
| PARADISE BAY | 46232 | 2003 | JAPAN | 9,8 MIL USD TO UNDISCLOSED |



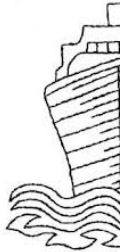
CONTAINER SHIPS

| NAME | DWT | TEU | Y.O.B. | P.O.B | PRICE |
|-------------|--------|------|--------|-------|---------------------------|
| MSC DESIREE | 109802 | 9408 | 2017 | CHINA | 90 MIL USD TO UNDISCLOSED |



TANKERS

| NAME | DWT | HULL | Y.O.B | P.O.B. | PRICE |
|--------------------------|----------------|------|--------------|---------|-----------------------------------|
| VL SAKURA | 298641 | DH | 2001 | JAPAN | 24 MIL USD TO THAI BUYERS |
| KINGS ROAD ABBAY ROAD | 74986 74919 | DH | 2012 2013 | S.KOREA | EN BLOC 60,6 MIL USD TO PAKISTANI |
| ARDMORE SEAMASTER | 45840 | DH | 2004 | JAPAN | 9,7 MIL USD TO CHINESE |
| AXELOTL | 37389 | DH | 2004 | S.KOREA | ABT 7 MIL USD TO UNDISCLOSED |



DEMOLITION



BANGLADESH

| NAME | LDT | DWT | Y.O.B | P.O.B. | PRICE |
|----------------|------|-------|-------|--------|-----------------|
| SALAM MULIA | 7506 | 24650 | 1996 | JAPAN | 445 USD PER LDT |



| NAME | LDT | DWT | Y.O.B | P.O.B. | PRICE |
|----------------|-------|--------|-------|--------|--------------------------------------------|
| BERIL | 2752 | 2431 | 1977 | JAPAN | 400 USD PER LDT |
| MG SHIPPING | 39000 | 250903 | 1993 | JAPAN | 382 USD PER LDT (green recycling) |

Disclaimer

All information stated in this report has been collected from a variety of maritime sources and is presented in good faith and without any guarantee from our part .

J. PSARRAS S+P CHARTERING, shall not accept any responsibility for any errors and/or omissions arising from this report and cannot be held responsible for any action taken and/or losses occurred as a result of the details included in this report.

Recirculation of same is not permitted without the written agreement of the aforementioned company, which is the only entitled one to produce copies of same.